

**Food from
the Heart
2017**

Annual Report

Contents

Chairman's Foreword

CEO's Message

How do we select our beneficiaries?

Food Distribution in Benefits

FFTH by the Numbers

Our Core Programmes

Voices of Volunteers and Beneficiaries

Key Events

Year in Review

Our Donors and Sponsors

Audited Financial Statements 2017

The One Dollar Question

Board of Directors

Staff and Management

Getting Involved

Our Mission

To reach out to the less-fortunate and brighten their lives by alleviating hunger through a food distribution programme and bringing joy through the distribution of toys and birthday celebrations.

Our Business Model

Professionalism, Efficiency, Transparency,
Self-sustainability

Our Shared Purpose

Sharing Hope, Nourishing Lives



Led by



A movement supported by over 200 voluntary welfare organisations



Chairman's Foreword

From our origins in 2003 when Christine and Henry Laimer embarked on the maiden bread run, Food from the Heart has grown to support 35,500 beneficiaries each month and distributed S\$5.52 million worth of food in 2017.

In 2017, we welcomed our new Chief Executive Officer, Kwa Eng Kiat, heralding a new phase for Food from the Heart with greater focus on strategic development, organisational development and fundraising and with that, we would like to extend our heartfelt appreciation to Anson Quek who served as Executive Director for six years.

In addition to welcoming Images in Motion Singapore as our Official Community Food Pack Partner, we also welcomed Goldbell Foundation as our Official Logistics & Transportation Partner. OCBC Bank has been instrumental in the provision and distribution of much welcomed eggs for our Community Food Pack programme and NTUC FairPrice continues to be a valued partner in our Market Place programme.

To increase our range of fundraising platforms, we introduced our inaugural Charity Golf Tournament to great success thanks to the support of FairPrice Foundation. As usual, our annual Passion Ball continues to be a key fundraising platform for us with the help of Audemars Piguet and many other friends.

In 2018, we will be commemorating our 15th Anniversary with a year-long calendar of activities. Our School Goodie Bag recipients can look forward to content with higher nutritional value and we will mark World Food Day on 16 October with more activities to draw attention to the plight of the underprivileged as we work towards eradicating hunger and poverty. We will also be launching another fundraising platform with a Charity Movie Screening.

All that we do would be impossible without the generous contributions and unrelenting efforts of numerous supporters. As we do not receive regular government funding, we are dependent on donations, both cash and in-kind, to sustain our programmes. I extend my heartfelt gratitude to our donors, sponsors and volunteers for their generosity and support, and my sincere thanks to our staff for their continued efforts and dedication on behalf of our beneficiaries.

Ronald P. Stride
Chairman
Food from the Heart



CEO's Message

Since our inception in 2003, the development of Food from the Heart has been in three phases. The first stage comprising the early days, was when our growth was largely fuelled by the passion and drive of our founders Christine and Henry Laimer. When the Laimers returned to Austria in 2011, a Board of Directors was instituted, leading to rapid expansion of our programmes and reach, and professionalisation of our operations. Now, in the midst of a crowded non-profit sector, growing affluence of Singaporeans but also paradoxically, increasing numbers of low-income households and elderly, we are looking at consolidation and change to prepare for the next stage of Food from the Heart's development.

With a 30% growth of Self Collection Centres under our Community Food Pack programme from 40 to 52 centres, we now support 8,190 individuals under this programme. Our School Goodie Bag programme is undergoing a review and will be relaunched in 2018 with boosted contents of higher nutritional value and greater variety. This programme continues to be a key area of focus for us as we intensify efforts to reach out to more donors and schools, to ensure that no child in Singapore ever has to go to school hungry. Our Clean Plate Campaign has grown from five participating schools in 2013 to 50 last year, and similarly our Toy Buffet welcomed 30 corporate and institutional partners, an increase of over 40%.

Amidst all these activities, there was a change in organisational leadership in the 2nd half of the year. Building upon the momentum and the hard work put in by the staff, coupled with the strong support of the Board, the year 2017 finished on a positive note with stronger financial results than the previous year. 2018 marks our 15th Anniversary year and we will be rolling out a number of new initiatives, foremost of which will be a strategic plan incorporating new fundraising activities and awareness campaigns with the objective of raising funds so that we grow our support of the underprivileged.

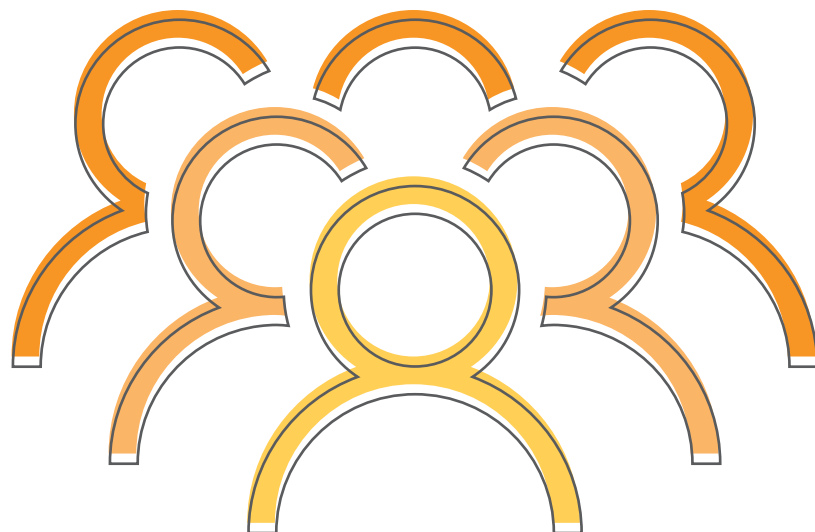
Much work needs to be done to consolidate and fine-tune our core programmes, and as we streamline our internal processes to identify areas where we can do more for our beneficiaries, we count on our many volunteers, partners, sponsors and donors to continue to make a difference in the lives of the beneficiaries whom we serve. My thanks also to the staff of Food from the Heart for whom all that they do is a labour of love.

We strive to continue the "heart work" needed in our mission to alleviate hunger in our community.

Kwa Eng Kiat
Chief Executive Officer
Food from the Heart

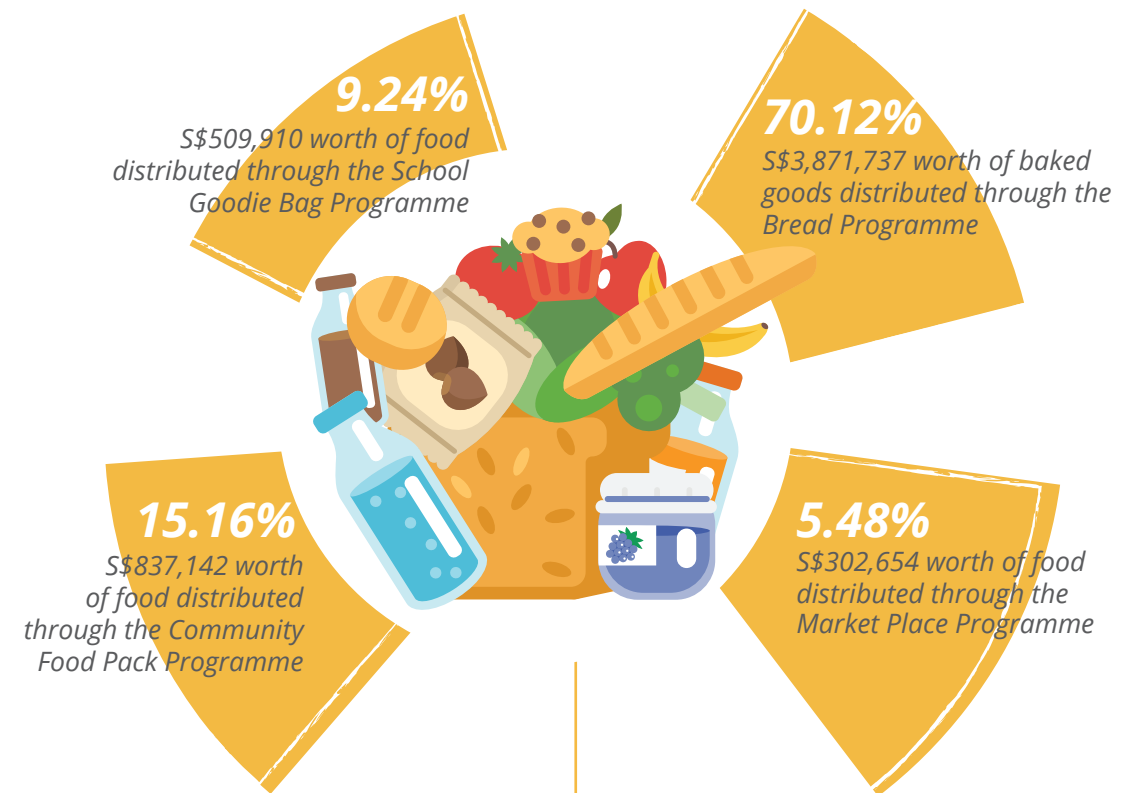
How do we select our beneficiaries?

Our beneficiaries include those in welfare homes, as well as the needy living in HDB heartlands. Regardless of race, language and religion, we extend our support to households with a per capita income of less than S\$450 per month. We do not select the beneficiaries ourselves but instead, work with partners such as Residents' Committees, Senior Activity Centres, Family Service Centres and schools to identify those in need. We extend our support to anyone who is in need of food – be it Singaporeans, Permanent Residents or foreigners. With our current programmes and partners, the majority of those whom we support range from families with young children, to elderly couples or elderly living on their own.



Food Distribution in Benefits

We are pleased to report that in 2017, we distributed **S\$5.52 million** worth of food to more than 35,500 beneficiaries. For every dollar that we received in cash (S\$2.87mil), we succeeded in giving S\$1.92 of benefits to our beneficiaries through both cash and in-kind donations be it food, other products and services.



For every dollar we received, we distributed **S\$1.92 in benefits**

FFTH by the Numbers



35,555
people benefitting from
FFTH's core programmes

9,000
toys distributed



120
birthday parties held



16,830
trolleys of
bread saved



6
FFTH Core Programmes



123
food donation drives
by corporations
& schools



32,041
bread runs



\$\$55
to support a
family of four for
one month



266 food distribution
points across the city

\$\$1.92

distributed in
benefits for every
dollar received



45,490
food packs
distributed



\$\$5,521,443
worth of food
distributed



Bread Programme

The programme that started it all, the Bread Programme came into existence when our founders, Christine and Henry Laimer, came across an article on unsold bread being thrown away at the end of each day. Determined to make a change, the Laimers, along with 120 volunteers, started a movement to collect surplus bread from 37 bakeries and hotels for redistribution to the needy in our community on 8 Feb 2003.

Fast forward to today, we now have 1,700 active volunteers who, rain or shine, help us collect unsold baked goods from various bakeries and hotels. These baked goods are then redistributed to our Self Collection Centres, welfare homes and other underprivileged individuals.

At the heart of the Bread Programme are our volunteers. With their help, we are able to save 1,400 supermarket trolleys full of bread every month - that's 28,000kg! Our partner bakeries and hotels are equally important for their generous daily donations.

116 partner bakeries & hotels

166 distributions points

22,000 beneficiaries

32,041 bread runs



Community Food Pack

The Community Food Pack programme was started to reach out to the underprivileged living within the heartlands of Singapore who often struggle to pay school fees, medical and utility bills, let alone have enough to put together a nutritious meal. By working with Residents' Committees, Family Service Centres and Senior Activity Centres, we identify and provide weekly bread rations, as well as monthly food packs of non-perishable essentials, fresh eggs and fruits to those in need.

Food donation drives by the public, corporations and schools play an important part in making sure that our beneficiaries receive basic food necessities such as rice, cooking oil and canned food on a regular basis. We also rely greatly on our committed volunteers for helping with weekly distributions.

In 2017, we received our single largest donation of S\$1 million from Images in Motion Singapore! This donation will fund our growth of additional Self Collection Centres over the next five years. We also welcomed OCBC Bank on board as our Official Fresh Eggs Sponsor, providing financial and voluntary support for regular distribution of trays of eggs to our beneficiaries.

52 Self Collection Centres

8,190 beneficiaries

28,690 food packs distributed



School Goodie Bag

For many disadvantaged students, a hearty breakfast to keep them energised for a day in school is a rare treat as their families struggle to put meals on the table. When these children go to school on an empty stomach, they are more susceptible to falling ill and have a difficult time concentrating in school.

By working with 28 neighbourhood schools, the School Goodie Bag programme reaches out to students under the Financial Assistance Scheme by providing them and their families with monthly food essentials such as rice, cooking oil and biscuits worth up to S\$55. It takes S\$33,000 a year to support a school of 50 students, and S\$660 for a family of four.

In 2017, we started efforts to improve the nutritional value of the School Goodie Bag contents. We are excited to launch the new School Goodie Bag in 2018 with healthier and more nutritious items!

28 schools

5,600 beneficiaries

16,800 goodie bags distributed



Thank you for adopting a school for a year!

Alisdair Ferrie & Karen Fawcett
 Ascendas-Singbridge Gives Foundation
 Cru Asia Ltd
 Goldbell Foundation
 Goldman Sachs Charitable Gift
 Koh Chan Guan & Family
 Marriott International
 SIA Engineering Company
 Singapore American School
 Singapore Post Limited

Toys from the Heart

Toys contribute to a child's early memories. Other than providing them with happiness and fun, toys also allow children to experience a wide range of developmental benefits. However, children from underprivileged backgrounds rarely have the chance to play with toys.

Toys from the Heart was started with the aim to deliver a message of hope and love, and ensure that underprivileged children are given the opportunity to experience the joy of receiving toys.

We operate a "Toy Bank" and accept donations of new and pre-loved toys in excellent condition for our young beneficiaries. The toys are gift-wrapped, and given during our annual Toy Buffet, monthly birthday parties and seasonal celebrations. Toys are also often given to individuals and groups going on mission trips, so that we can spread the joy of giving to those in need beyond our borders.

9,000 toys distributed



Birthdays from the Heart

Birthdays are a special occasion for everyone each year. However, while many of us have the privilege of celebrating our birthdays with cakes and parties, such celebrations are especially rare in financially-challenged homes.

We partner with welfare homes to celebrate birthdays of disadvantaged children and elderly on a monthly basis. Each month, our volunteers visit these homes to host birthday parties with birthday cakes, games, and birthday presents for 1,108 elderly folks and children, allowing them to mark their special day with joy and cheer.

10 welfare homes

120 birthday parties

1,108 beneficiaries



Market Place

Ever wonder what happens to items with damaged packaging or near expiry products left on the shelves of supermarkets? Despite their still usable condition, these items are often left unsold and eventually discarded. Instead of allowing these items to go to waste, we give them a new lease of life by redirecting them to the underprivileged.

With NTUC FairPrice as our “Market Place Partner”, we collect unsold but still wholesome items from all 147 NTUC FairPrice outlets island wide to redistribute them to the needy in Singapore. These items can range from food items like cereal and canned food, to household items like laundry detergent. All donated items are brought back to our warehouse where they are carefully sorted and packed by our volunteers, and then redistributed to welfare homes, as well as our beneficiaries under the Community Food Pack programme. The much-needed supplies and necessities help to offset expenses, thereby reducing their financial burden.

41 welfare homes

7,618 beneficiaries



The Giving Hands



Isaac & Jin, Bread Programme Volunteers

Isaac and Jin are a couple who have been a part of our pioneer batch of Bread Programme volunteers. Till today, they still do bread runs every Tuesday, sometimes with their children as well!

"We are very inspired by volunteers who do the bread runs despite the inconvenience of not having their own vehicles. For us, we have our own car. We also have a little over an hour every week night to spare, so why not us as well?"

Clara, Community Food Pack Volunteer

Clara is part of a group of pioneer volunteers who helped kick start the Community Food Pack programme at Marine Terrace Self Collection Centre. Clara, who struggled financially in the past, knew what it was like to go without food and often opted to give whatever little she has to her children instead. "Now that I am able to stand on my own two feet again, I have decided to give back to the community for what they have given to me."



Lionel Lim, Warehouse Volunteer



Lionel and his friends join us every Tuesday to help with the packing and sorting of food items. A familiar face at our warehouse, we often see Lionel stepping out of his usual roles to help us facilitate and guide newer volunteers on the procedures of handling the food we receive.

"After retiring, I felt that it was time for me to give back. Food from the Heart was a perfect match for me, and it also gave me a chance to bond with old and new friends alike."

The Receiving Arms

Mr & Mrs Ong, School Goodie Bag Recipients

Mr & Mrs Ong are parents of Dawn, a student under our School Goodie Bag programme. With a family of eight, Mr Ong struggles to take care of the family as the sole breadwinner; having to pay for his children's school fees on top of medical bills for Mrs Ong.

"The goodie bag of food essentials helps me defray my groceries cost. It provides me with the ease of mind that we will always have food in the house, no matter our situation."



Blessed Grace Social Services, Market Place Recipient

Auntie Jenny from Blessed Grace Social Services often visits our warehouse with her colleagues to collect daily essentials for their own beneficiaries. This includes ingredients for cooked food prepared by her organisation. Cleaning supplies also come in handy during their regular elderly home visits. "With Market Place, we can save more money, as well as have a greater variety of what we can bring back."

School Goodie Bag Recipient

School Counsellor Ms Solomon says that the programme not only allows opportunities for the school to reach out to students and their families when they collect the rations, but also teaches students about gratitude. "The students get a chance to appreciate the help they receive. They express their gratitude for how much their families have benefited and not just themselves alone."



I CAN Award

To motivate and commend students we support under our School Goodie Bag programme for their positive attitude despite obstacles in life, we inaugurated the "I CAN Award". The award celebrates the students' "I Can!" attitude and rewards their **I**mprovement in **C**onduct, **A**ttendance, and **N**on-academic performance.

We held the fifth edition of "I CAN Award" at Seng Kang Primary School on 13 March to reward 81 students under our School Goodie Bag programme. It was a proud moment for them, as they made their way confidently onto the stage to receive their awards.

We thank **Union Bancaire Privée** for sponsoring the award ceremony once again, and to Seng Kang Primary School for the use of their premises for the ceremony. Congratulations to all our recipients!



Bohemia Passion Ball

Special thanks to the following sponsors:

Audemars Piguet
Images in Motion Singapore
UBP Bank
Tote Board, Singapore Pools

Andrew Thomas
Anita Kapoor
ASEC Security
Bochic
Blissfulhots
Elite Flora
Ermenegildo Zegna
Four Seasons Serengeti
The Fullerton Hotel Singapore
Grand Vin
Ho Printing
Lotus Arts de Vivre
Moet Hennessy Diageo
Mr & Mrs Eugene Yang
Ode To Art
Print Lab
Resplendent Ceylon
RJ Paper
SilkAir
Singapore Airlines
Singapore Tatler
Twice

The 14th edition of Passion Ball held on 8 April embraced the theme of Bohemia, a tribute to the free spirit of truth, love and freedom. Presented by **Audemars Piguet**, the gala fundraiser featured a specially prepared gourmet dinner by The Fullerton Hotel Singapore, a charity auction of nine items and entertaining performances by Steve Lippia and The Jeremy Monteiro Little Big Band.

Images in Motion Singapore also announced their generous donation of S\$1 million to Food from the Heart - this is the single largest monetary donation that we have ever received! The amount will go towards supporting an additional 30 Self Collection Centres under our Community Food Pack programme over the next five years from 2017 - 2021.

The event saw an attendance of almost 340 guests, and raised over S\$550,000 net of expenses. A big cheer to everyone who supported us generously through Passion Ball, be it through sponsorship, donations or volunteering! Here's to many more Passion Balls to come.



Clean Plate Campaign

We started the Clean Plate Campaign, in conjunction with World Food Day, to educate students on the environmental and societal impact of food waste, and to inculcate the habit of mindful eating at a young age. Singapore generated 791,000 tones of food waste in 2016, which means everyone throws away on average two bowls of rice daily! For the fifth edition, we reached out to 31,441 students from 50 primary schools, a 48% increase from last year.

We were very privileged to have the continuous support of **FairPrice Foundation** for their pledge to match every clean plate count with a S\$10 donation (up to the maximum of S\$100,000).

Thank you to all the volunteers who joined us on this amazing three-month journey, especially those from Academy of Singapore Teachers, ADVO, Carousell SG, Credit Suisse AG, Giant Singapore, Sage Foundation, Siemens Singapore and UPS Singapore.

Thank you to the participating schools!

Alexandra Primary School
Anglo-Chinese School (Junior)
Anglo-Chinese School (Primary)
Beacon Primary School
Bedok Green Primary School
Boon Lay Garden Primary School
Bukit Panjang Primary School
Casuarina Primary School
Cedar Primary School
CHJ (Katong) Primary School
Chongfu School
Chongzheng Primary School
Chua Chu Kang Primary School (1st)
Damai Primary School
East Coast Primary School
Eunos Primary School

Evergreen Primary School
Frontier Primary School
Gan Eng Seng Primary School
Gongshang Primary School
Greenridge Primary School
Henry Park Primary School
Horizon Primary School
Huamin Primary School
Jing Shan Primary School
Junyuan Primary School
Loyang Primary School
Maha Bodhi School
Marsiling Primary School
Mee Toh School
Montfort Junior School
North Vista Primary School
Poi Ching School

Punggol Green Primary School
Punggol Primary School
Red Swastika School
Sembawang Primary School
Sengkang Primary School
Shuqun Primary School (3rd)
South View Primary School
St. Stephen's School
Stamford Primary School
Tampines North Primary School
Temasek Primary School (2nd)
Woodgrove Primary School
Xinghua Primary School
Xingnan Primary School
Xishan Primary School
Yuhua Primary School
Zhonghua Primary School



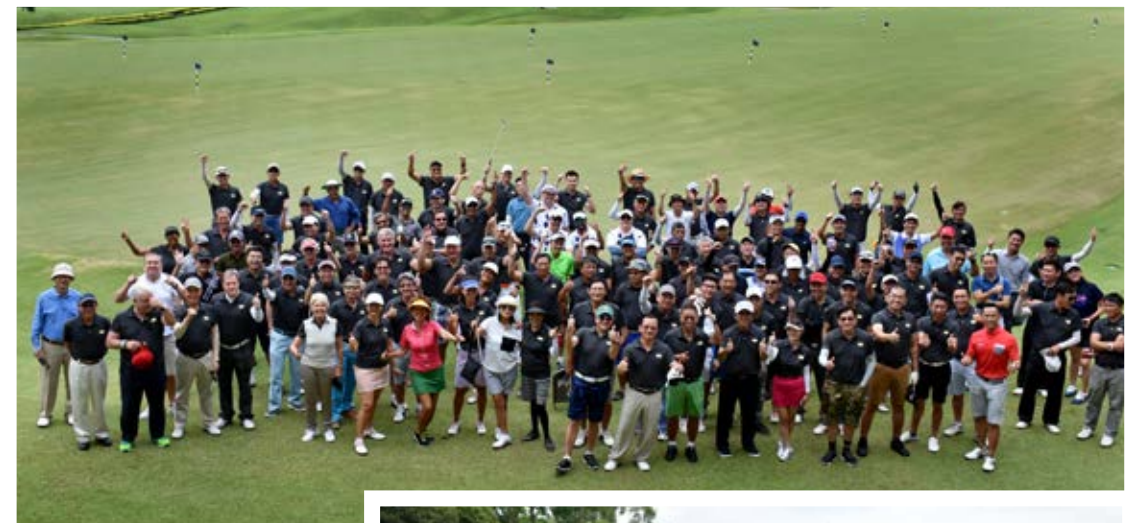
Charity Golf Tournament

On 22nd September, we held our very first Charity Golf Tournament, presented by **FairPrice Foundation**. The morning started out with a light drizzle, but mellowed out to clear skies and light breezes; perfect golfing conditions! Though no one managed to score the coveted "Hole-in-One", we would like to congratulate all novelty prize winners, as well as the top three under the Men's and Women's Championship.

With 140 golfers present on the greens and guests who joined us for dinner, we raised almost S\$138,000 net of expenses! Thank you to Mr Seah Kian Peng, CEO of NTUC FairPrice for gracing our event as Guest of Honour, and all our sponsors and volunteers who made the event possible. We'll see everyone at the next Par-tee for Charity!

Special thanks to the following sponsors:

<i>FairPrice Foundation</i>	<i>Asia Pacific Breweries (S) Pte Ltd</i>	<i>New Ubin Seafood</i>
<i>Goldbell Foundation</i>	<i>Asiatique Collections</i>	<i>Nicolas Le Restaurant</i>
<i>IG Logistics</i>	<i>Binomio Spanish Restuarante</i>	<i>ONEFM 91.3 - Andre Hoeden & Glenn Ong</i>
<i>LHN Group</i>	<i>Concorde Hotel Singapore</i>	<i>Pan Pacific Singapore</i>
<i>DBS Bank</i>	<i>Conrad Centennial S'pore</i>	<i>Radius Singapore</i>
<i>Trirec</i>	<i>Corney & Barrow</i>	<i>SL Global</i>
<i>Daimler South East Asia</i>	<i>Erwin's Gastrobar</i>	<i>Swissotel Merchant Court</i>
<i>Print Lab Pte Ltd</i>	<i>Fairmont Singapore & Swissotel</i>	<i>Tapas Club</i>
<i>The Peak Singapore</i>	<i>The Stamford</i>	<i>The Dalmore Whisky</i>
<i>Singapore Island Country Club</i>	<i>Grand Hyatt Singapore</i>	<i>The Tatami Shop</i>
<i>Tote Board, Singapore Pools</i>	<i>Goh Joo Hin Pte Ltd</i>	<i>The Fullerton Bay Hotel</i>
	<i>Hotel Clover 769</i>	<i>The Fullerton Hotel</i>
	<i>Indah Puri Golf Resort</i>	<i>The St. Regis Singapore</i>
	<i>LeVel 33</i>	<i>Yeo Hiap Seng Ltd</i>
	<i>Mandarin Oriental Singapore</i>	
	<i>MST Golf</i>	



Toy Buffet

Our Toy Buffet is an annual carnival offering games, food and toys for children from disadvantaged backgrounds. The theme for the 13th edition of Toy Buffet was “Discover the Magic in You”, with a hope that the children will look within themselves for the courage to be who they want to be.

Held at Nanyang Polytechnic on 10 November, we saw over 2,700 children from 66 schools and Self Collection Centres in attendance. Sponsored by **Ascendas-Singbridge Gives Foundation, Federal Express Singapore, First State Investments** and **NTUC FairPrice**, these children were spoilt for choice by the crazy wide selection of toys offered by 30 toy booths, ranging from board games to bicycles!

Thank you to Assoc Prof Muhammad Faishal Ibrahim, Parliamentary Secretary for the Ministry of Social and Family Development for gracing the event as Guest of Honour as well as all our volunteers for putting together such dazzling booths, guiding the children and holding toy donation drives for Toy Buffet! Expecto Patronum!

Thank you to the following Sponsors:

Ascendas-Singbridge Gives Foundation	Nanyang Polytechnic	Li An Foodstuff
Federal Express (Singapore) Pte Ltd	Colornet Printing Technology Pte Ltd	Lieu Marketing
First State Investments (Singapore)	Abana Singapore	Mogul Productions
NTUC FairPrice Co-operative Ltd	Centurion Marketing	NOM Bistro & Bakery Cafe
	Coca-Cola Singapore Beverages	Seng Hua Hng Foodstuff
	F&N Foods Singapore	Sunshine Bakeries
		TA Studio
		URC Food (Singapore)



Thank you to the Toy Booth participants:

Corporations

Agility Global Integrated Logistics
Ascendas-Singbridge Gives Foundation
Bank of Singapore
City Gas Pte Ltd
COMO Hotels & Resorts
Credit Suisse, AG
DBS Bank
Dell Singapore
Elsevier Singapore Pte Ltd
Emerson Automation Solutions
Federal Express (Singapore) Pte Ltd

First State Investments (Singapore)
Forbes Asia
Fuji Xerox Singapore Pte Ltd
Khind Systems (S) Pte Ltd
NTUC Fairprice Co-operative Ltd
SIA Engineering Company Ltd
The Desai Squad
Union Bancaire Privée
Veritas Storage (Singapore) Pte Ltd

Schools

Admiralty Primary School
Anglo-Chinese School (Junior)
Bukit Panjang Primary School
Global Indian International School (Balestier)
Ngee Ann Polytechnic School of InfoComm Technology
Northoaks Primary School
Pei Hwa Presbyterian Primary School
Qihua Primary School
Seng Kang Primary School
Singapore American School

Year in Review



Jan/Dec - Giant Food Donation Drive
A festive food donation drive at multiple Giant Supermarket outlets was conducted, with our volunteers leading the charge.



Jan - AsiaMalls CNY Goodie Food Drive
Chinese New Year goodies food donation drive, as well as food pack and angbao distributions, thanks to AsiaMalls.



Feb - Mandarin Orange Donation
Fresh mandarin oranges donated to us by Nishen Tropical Fruits, just in time for the Lunar New Year!



Feb - Toy Buffet at Ikea Alexandra
A mini toy buffet for our young beneficiaries with a huge variety of soft toys, thanks to Ikea Alexandra.



Apr - SAS Walk-a-thon
The 11th annual walk-a-thon by Singapore American School's 2nd grade students in aid of Food from the Heart.



May - OCBC The Great Egg Cook Out
An egg-cellent carnival was organised for our beneficiaries to commemorate OCBC Bank's year-long sponsorship and distribution of eggs for 2,500 households.

Year in Review



Jun - Stars of the West End: Art for Charity
A charity gala featuring an amazing performance by London's West End stars, thanks to the British Theatre Playhouse.



Jun - Shanghai Yue Opera Night
A nostalgic night for the older folks as they enjoy the Shanghai Yue Opera, thanks to Tang Renaissance.



Jul - Kelantan SCC's 10th Anniversary
Kelantan Self Collection Centre and our volunteers celebrated our 10th year partnership.



Sep/Dec - Baking Fun with Kids
Volunteers from Prudential and DSTA got together to teach our young beneficiaries the joy of baking.



Sep - Fresh Veggie Donation
Organic fresh greens donated by New Sky & Land Organic Agriculture! Our freshest and greenest donation yet.



Sep - Marriott Run to Give 2017
Over 400 staff from Marriott International, along with their families and friends, putting their best foot forward for charity!

Year in Review



Oct - CBRE Charity D&D

A Dinner & Dance by CBRE Real Estate raised funds for Food from the Heart.



Oct - Pimp My Tuk Tuk

A group of amazing individuals travelled around Sri Lanka in tuk tuks to raise funds through a novel and creative way.



Oct - Shopping for Beneficiaries

A trip to the supermarket for our beneficiaries, sponsored by Visa International, OCBC Bank and NTUC Link.



Nov - SIAEC Fun Run @ Zoo

Fun Run by SIA Engineering Company was held at the Singapore Zoo, and created an outing opportunity for our beneficiaries too.



Nov - Asiatique Christmas Fundraiser

Asiatique Collections hosted a delightful Christmas fundraising bazaar with all proceeds to Food from the Heart.



Dec - Christmas Parties

Christmas Parties for our beneficiaries thanks to Marriott Tang Plaza Hotel, M-Chemical and T-Touch!

105,000

of Singapore HDB households (12%) live on a monthly household income of less than S\$1,500. Many of these experience food insecurity. Poor families, elderly couples and singles are particularly susceptible.*



*Based on a study commissioned by FFTH and conducted by Bain and Company, and National University of Singapore's Center for Culture-Centered Approach to Research and Evaluation (CARE) (Sept 2015)

Our Donors & Sponsors

The work that we do to improve the lives of the less privileged is made possible due to the commitment and generosity of all our donors, sponsors & partners. We are immensely grateful for their support and partnership to our cause. Thank you!

Official Community Food Pack Partner (2017 - 2021)

Images in Motion, Singapore

Official Logistics & Transport Partner (2017 - 2019)

Goldbell Foundation

Market Place Partner

NTUC FairPrice Co-operative Ptd Ltd

Provision and Distribution of Eggs for Community Food Pack Programme

Oversea-Chinese Banking Corporation Limited

*Corporate Cash Sponsors

S\$50,000 & Above

Audemars Piguet (Singapore) Pte Ltd
Interchem Pte Ltd

NTUC FairPrice Foundation Ltd
SIA Engineering Company Limited

S\$25,000 - S\$49,999

Ascendas-Singbridge Gives Foundation
Cru Asia Limited
First State Investments (Singapore)
Goldman Sachs Charitable Gift
MFS International Singapore Pte Ltd
Singapore American School Limited

Starwood Asia Pacific Hotels & Resorts
Pte Ltd
Visa Worldwide Pte Limited
Zendesk Neighbor Foundation

S\$10,000 - S\$24,999

Adrian & Susan Peh Community Fund
Bloomberg L.P. HK
Chew How Teck Foundation
EFG Bank AG
Ermenegildo Zegna Far-East Pte Ltd
Geoconsult Asia Singapore Pte Ltd
IG Logistics Pte Ltd
Le Meridien Singapore, Sentosa
Lee Foundation

Lee Kim Tah Foundation
LHN Group Pte Ltd
Marina Bay Sands Pte Ltd
Singapore Aero Engine Services Pte Ltd
The Shaw Foundation Pte
Union Bancaire Privée
Vantage Shipbrokers Pte. Ltd.

*Corporate cash donations of S\$10,000 and above

*Individual Cash Sponsors

S\$25,000 and above

Anil Thadani
Kishin RK
Lee Teng Suan

Ronald Paul Stride
Sheila Patel
Steve Tay Soo Hoe

Selena Tsui Ting Ting
Yavuz Mustafa

S\$10,000 - S\$24,999

Alisdair Ferrie & Karen
Fawcett
Chin Bottinelli
Christopher Martin

David Lee Kay Tuan
Emily Lim Bein Eng
Goh Soo Jin
Keow Beng Seah

Knut Unger
Olivia Leong
Vivian PJ Chandran

S\$5,000 - S\$9,999

Jeremy Ho
Kunal Chowdhry
Leong Quor Meng

Matthew Ronald Gyde
Neil Johnson
Sharon Chandran

Stefanie Koh Lin Siew
Timothy Amyas Hartnoll
Timothy Yeo Wei Tien

S\$2,000 - S\$4,999

Albert Ee Oon Sun
Andrea Bille
Andress Goh
Catherine Kheng
Cheong Choon Ghee
Cheryl Lee Koong Yinn
Alfred Chua Cheng Huat
Denise Phua Lay Peng
Dolores Tay Tse Hui
Emmett James Fahey
Erika Ann Swan
Genevieve & Georges
Grosliere
Ho Xiang Yu Wendy
Kor Swee Yong, Harris

Khushroo Dastur
Lau Kay Keong
Lim Swee Lin
Lok Vi Ming
Martin Siah Geok Wah
Mohan Kumar Joseph
Ng Meng Wai
Nguyen Do
Ong Lay Beng
Quah Soon Hong
Pascal Demierre
Rajgopal Rajkumar
Ramanathan
Balasubramanian
Ravindran S/O Sivalingam

Rizvan Baig
Shirley Crystal Chua
Stefan Spielbichler
Stuart James McLelland
Tan Ah Leong
Tan Dora Tuana
Tan Keng Chye
Tan Kwang Hwee
Tan Li Xin, Zeena
Tan Wei Reng Galven
Yan Pei Ling
Yang Yung-Chuan Eugene
Yeo Lay Hong
Yip Chun Hong Kevin

*Individual cash donations of S\$2,000 and above

Donations In-Kind**Bakeries & Restaurants**

1 More Bread
 Ana Bakery
 And All Things Delicious
 Artisan Boulangerie Co. (5 outlets)
 Bakery Degree
 Bak.er.Like Group Pte Ltd
 Bakerzin Singapore
 Bengawan Solo HQ
 Bethel Confectionery
 Bread Cottage
 Breadfresh (2 outlets)
 BreadTalk (7 outlets)
 Bun Times (2 outlets)
 C'rius Bake
 Common Man Coffee Roasters
 Delifrance (3 outlets)
 Dohca Bakery
 Dough & Grains (2 outlets)

Doughshop Pte Ltd
 Four Leaves (15 outlets)
 Han's Cafe (3 outlets)
 Joe & Dough
 Jollibean (9 outlets)
 Juz Bread
 Keng Bakehouse
 Kohi-Koji Cafe & Bakery
 LeVeL33
 Love Tea Cafe
 Marche Restaurant
 Mezza9 - Grand Hyatt Singapore
 MUNCH
 Nick Vina Artisan Bakery
 Odette
 Omzyn Cake
 OverEasy Fullerton
 Prego Deli

Educational Institutions

Anderson Primary School
 Anderson Secondary School
 Beacon Primary School
 Bedok Green Secondary School
 Bendemeer Primary School
 Canadian International School
 Cantonment Primary School
 Catholic Junior College
 Cavenur Kindergarten
 Chongfu School
 Chongzheng Primary School
 Coral Primary School
 Deyi Secondary School
 E-Bridge Infant Care & Childcare Centre
 East Coast Primary School
 East View Secondary School
 EtonHouse International
 Research Pre-school
 Evergreen Primary School
 Fernvale Primary School
 Gan Eng Seng Primary School
 Hillgrove Secondary School
 Holy innocent Primary School
 Horizon Primary School
 Hwa Chong Institution
 Innova Primary School
 ITE College Central
 Kaplan City Campus @ POMO

Kong Hwa School
 Kranji Primary School
 Maha Bodhi School
 Manjusri Secondary School
 Maris Stella High School
 Nan Chiau High School
 Nan Hua High School
 Nanyang Institute of Management
 Nanyang Polytechnic
 Nanyang Technological University - Nanyang Business School
 National University of Singapore
 Nexus International School (Singapore)
 Northbrooks Secondary School
 Pasir Ris Crest Secondary School
 Pathlight School
 PCF Sparkletots Preschool
 Pei Hwa Secondary School
 Presbyterian High School
 PSB Academy
 Punggol Primary School
 Queenstown Secondary School
 Radin Mas Primary School
 Republic Polytechnic

Prima Food Pte Ltd (HQ)
 PrimaDeli (7 outlets)
 Q Bread
 RedMart
 RISE Restaurant - Marina Bay Sands Pte Ltd
 Rotikek
 Royale Restaurant
 NOM - Bistro & Bakery
 Sembawang Confectionery
 Starbucks (4 outlets)
 Sunshine
 Swissbake (5 outlets)
 The Bread Table
 The Sandwich Shop (5 outlets)
 Wheat Bakery
 Yi Jia Bakery House Cafe

River Valley High School
 Seng Kang Primary School
 Shuqun Primary School
 Singapore Institute of Management
 Singapore Korean International School
 Singapore Polytechnic
 Spring Brainy Kidz @ Ubi
 Springdale Primary School
 St. Andrew's Junior School
 St. Anthony's Canossian Secondary School
 St. Anthony's Primary School
 St. James' Church Kindergarten (Gilstead Campus)
 Tampines North Primary School
 Tanglin Trust School
 Teck Ghee Primary School
 Temasek Primary School
 UWCSEA East Campus
 West Grove Primary School
 West Spring Secondary School
 Woodgrove Primary School
 Woodlands Ring Secondary School
 Yio Chu Kang Primary School
 Yumin Primary School

Donations In-Kind (Continued)**Hotels**

Concorde Hotel
 Fairmont Singapore & Swissôtel
 The Stamford
 Four Points by Sheraton Singapore, Riverview
 Four Seasons Hotel Singapore
 Grand Hyatt Singapore
 Holiday Inn Singapore Atrium

Mandarin Oriental Singapore
 Marina Bay Sands Pte Ltd
 Marriott Hotel Singapore
 Marriott Tang Plaza Hotel
 Park Hotel Group
 Regent Singapore
 Resorts World Sentosa
 Shangri-La Hotel Singapore

The Fullerton Hotel Singapore
 The Ritz-Carlton Millenia Singapore
 The St. Regis Singapore
 The Westin Singapore
 W Singapore - Sentosa Cove

Corporations

AB Global -Alliance Bernstein (Singapore) Ltd.
 Abana Singapore Pte Ltd
 AbbVie Pte Ltd
 Advanced Micro Devices (S)
 Alfa Laval Singapore Pte Ltd
 AMAT - Applied Material South East Asia Pte Ltd
 American Express International INC
 American Women's Association of Singapore
 Ammerland Asia Pacific
 Amphenol FCI Connectors Singapore Pte. Ltd.
 Anytime Fitness - Bukit Timah Branch
 ArevA Group Pte. Ltd
 AsiaMalls Management Pte Ltd
 ASML Singapore Pte Ltd
 Axis Communications (S) Pte Ltd
 Bank of Singapore
 Blossom Discovery Centre
 Bourouge Pte Ld
 Boustead Projects Pte Ltd
 Buona Vista Constituency Office
 Chevron U.S.A (Singapore Branch)
 Chuan Kiat Demolition Works (S) Pte Ltd
 Church of St Ignatius
 Classic Fine Foods (S) P/L
 Credit Suisse
 D.H.L - Greenwich Drive
 Da Bei Guan Yin Dian
 DBS Asia Hub
 Dell Asia Pte Ltd
 DuPont Industrial Biosciences
 Dynamic Ocean Pte Ltd
 Emporium Shokuhin
 Facebook Singapore Pte Ltd

Giant Supermarket
 Gift Something
 Global Logistic Properties Ltd
 Goh Joo Hin Pte Ltd
 Hao Mart Pte Ltd
 Health Promotion Board
 Hela Spice Singapore Pte Ltd
 HOL- Hands On Learning
 Ikano Private Limited
 J.P. Morgan Private Bank
 Jitta Trading (Events & Exhibition)
 Joan Bowen Cafe
 Kohler Singapore Pte Ltd
 Kok Kock Leong Enterprise Pte Ltd
 KTC Engineering & Construction Pte Ltd
 Lam Soon Singapore Pte Ltd
 Le Méridien Singapore, Sentosa
 Maxus Singapore
 MSD International
 MSD International - IT Hub
 MyVillage - Chye Lee & Sons
 National Institute of Education
 Natural Cool
 Nestlé Singapore Pte Ltd
 New Sky & Land Organic
 Agriculture Pte Ltd
 Nishen Tropical Fruits Pte Ltd
 Noo-box Pte Ltd
 NTUC Fairprice Co-operative Limited
 Old Chang Kee Ltd - c/o Ten & Han Trading P/L
 OUE Limited
 Papa's Grove
 PayPal Pte Ltd
 POIS Boutique
 Prima Foods Pte Ltd
 RCMA Asia Pte Ltd

RELC SEAMEO - Staff Welfare Social and Recreation Committee
 Remy Cointreau International Pte Ltd
 Rio Tinto
 Roche Diagnostics Asia Pacific Pte Ltd
 Rolls-Royce Singapore Pte Ltd
 Ryder-Ascent Logistic Pte Ltd
 S&P Global Platts
 SAF PERS Hubs
 Safran Landing Systems
 SATS BRF Foods Pte Ltd
 SDL Group of Companies
 Sembawang God of Wealth Temple
 Sentosa Cove Resort Management Pte Ltd
 Service Now
 SIA Engineering Company
 Siemens Pte Ltd
 Singapore Paeds Clinic
 Singapore Post Ltd
 Social Health Growth Ltd.
 Sonnamera Pte Ltd
 Super Coffee Corporation Pte Ltd
 Tai Sun (Lim Kee) Food Industries P/L
 The Local People/Singapore Land Authority
 ToTT Store
 Trinity Community Centre
 UBS Investment Bank
 Union Bancaire Privée
 Verite Productions Pte Ltd
 Wholesome Harvest
 Xilinx Asia Pacific Pte Ltd
 Yeo Hiap Seng Limited
 Yusen Logistics (S) Pte Ltd

Audited Financial Statements 2017

Income & Expenditure Statement

Income	Note	2017 (\$)	2016 (\$)
Outright Donations	1	743,240	427,822
Fundraising Events	2	790,484	541,140
Charitable Events	3	407,926	147,260
Food Purchase Account	4	826,635	937,340
Grant		50,000	50,000
Other Income		50,727	33,040
TOTAL INCOME		2,869,012	2,136,602
Expenditure		2017 (\$)	2016 (\$)
Fundraising Events		244,382	180,852
Charitable Events		166,142	139,567
Food Purchase Account		758,075	741,655
General & Administrative		1,369,234	1,240,324
TOTAL EXPENDITURE		2,537,834	2,302,398
Net Operating Surplus / (Deficit)		331,178	(165,796)
Non-Operating Income			
Utilisation of Funds		183,839	368,300
Amortisation of Deferred Funds		175,591	59,192
TOTAL NON-OPERATING INCOME		359,430	427,492
Surplus of Income over Expenditure		690,608	261,696

Annual Remuneration of Key Management Staff

Annual Remuneration	No. of Management Staff	
	2017	2016
Between S\$100,001 and S\$150,000*	1	2

*Includes basic salary, annual wage supplement, allowances and the employer's contributions to Central Provident Funds.

Food from the Heart is governed by the Board of Directors which is the final authority and has overall responsibility for policy making and governance. Board members are volunteers and receive no monetary remuneration for their contribution.

Food from the Heart has in place a Conflict of Interest and Confidentiality Policy Statement. Members of the Board of Directors must declare if they have a conflict of interest regarding any business before the Board.

Food From The Heart is committed to the highest standards of openness, probity and accountability. The organisation has adopted a Whistleblowing policy to enable employees of the Company to raise concerns internally and at a high level and to disclose information which the individual believes shows malpractice or impropriety.

Balance Sheet

Assets	Note	2017 (\$)	2016 (\$)
Plant and Equipment		439,600	428,742
Current Assets			
Deposits, Prepayments and Other Receivables		89,760	71,919
Cash & Bank Balances			
- Operating	5	1,192,884	556,995
- Reserves	6	929,941	916,119
- Designated	7	3,052,703	2,625,363
Total Cash & Bank Balance		5,175,528	4,098,477
Current Assets		5,265,288	4,170,396
TOTAL ASSETS		5,704,888	4,599,138
Funds			
Accumulated Funds		3,635,708	3,374,012
Designated Funds - Care & Share Matching Grant		(87,843)	265,776
Deferred Funds		364,075	369,886
Current Year Earnings		690,608	261,696
TOTAL FUNDS		4,602,548	4,271,370
Liabilities			
Other Payables & Accruals		104,113	110,979
Deferred Income		998,227	216,789
TOTAL LIABILITIES		1,102,340	327,768
Total Funds & Liabilities		5,704,888	4,599,138

Distribution Report

Total Amount of Food Distributed	2017 (\$)	2016 (\$G)
Bread Collection	3,871,737	3,562,926
Food Collection		
- Corporations	418,178	666,342
- Schools	173,834	156,492
Market Place	302,654	295,610
Purchased Food	755,040	740,247
Total Benefits Distributed	5,521,443	5,421,617
Total Funds Received	2,869,012	2,136,602
For every dollar donated, we generated benefits of	1.925	2.538
Benefits Distributed VS Operating Expenditure		
Total Benefits Distributed	5,521,443	5,421,617
Total Operating Expenditure	1,369,234	1,240,324
Operating Expenditure VS Benefits Distributed %	24.79%	22.88%

Notes to the Financial Information

	2017 (\$\$)	2016 (\$\$)
1. Outright Donations*		
Beiersdorf Singapore Pte Ltd	-	21,000
Bloomberg L.P.	-	10,430
Bloomberg L.P. HK	23,638	13,041
Chew How Teck Foundation	15,000	15,000
Cityview Place Holdings Pte Ltd - W Hotel	-	11,707
Credit Suisse AG	-	11,000
First State Investment Pte Ltd	35,628	-
Global Foundaries	-	12,222
Goldbell Foundation	59,000	-
Interchem Pte Ltd	110,000	-
Kwan Im Thong Hood Cho Temple	-	20,000
Le Meridien Singapore, Sentosa	15,535	-
Lee Kim Tah Foundation	10,000	-
Marina Bay Sands Pte Ltd	13,387	41,869
MFS International Singapore Pte Ltd	25,000	-
Propertyguru Pte Ltd	-	10,000
FairPrice Foundation Ltd	100,000	150,000
The Tudor Foundation	-	40,805
SIA Engineering Company Limited	62,830	71,985
Singapore Oil And Gas Classic (CCC) Pte Ltd	20,000	-
Wheelock Properties (Singapore) Ltd	-	10,000
Zendesk Neighbor Foundation	23,907	-
2. Fundraising Events*		
Adrian & Susan Peh Community Fund	10,000	10,000
Audemars Piguet (Singapore) Private Ltd	50,000	50,000
DBS Bank Ltd	-	10,000
EFG Bank Ltd	10,000	-
Ermenegildo Zegna Far-East Pte Ltd	10,000	10,000
Geoconsult Asia Singapore Pte Ltd	-	10,000
Goldbell Foundation	10,000	-
Goldman Sachs Charitable Gift	34,658	-
IG Logistics Pte Ltd	10,000	-
Images In Motion Singapore	50,000	-
LHN Group Pte Ltd	10,000	-
Lee Foundation	10,000	10,000
Lombard Odier (Singapore) Ltd	10,000	-
FairPrice Foundation Ltd	50,000	-
The Shaw Foundation Pte	10,000	10,000
Union Bancaire Privée	20,000	-

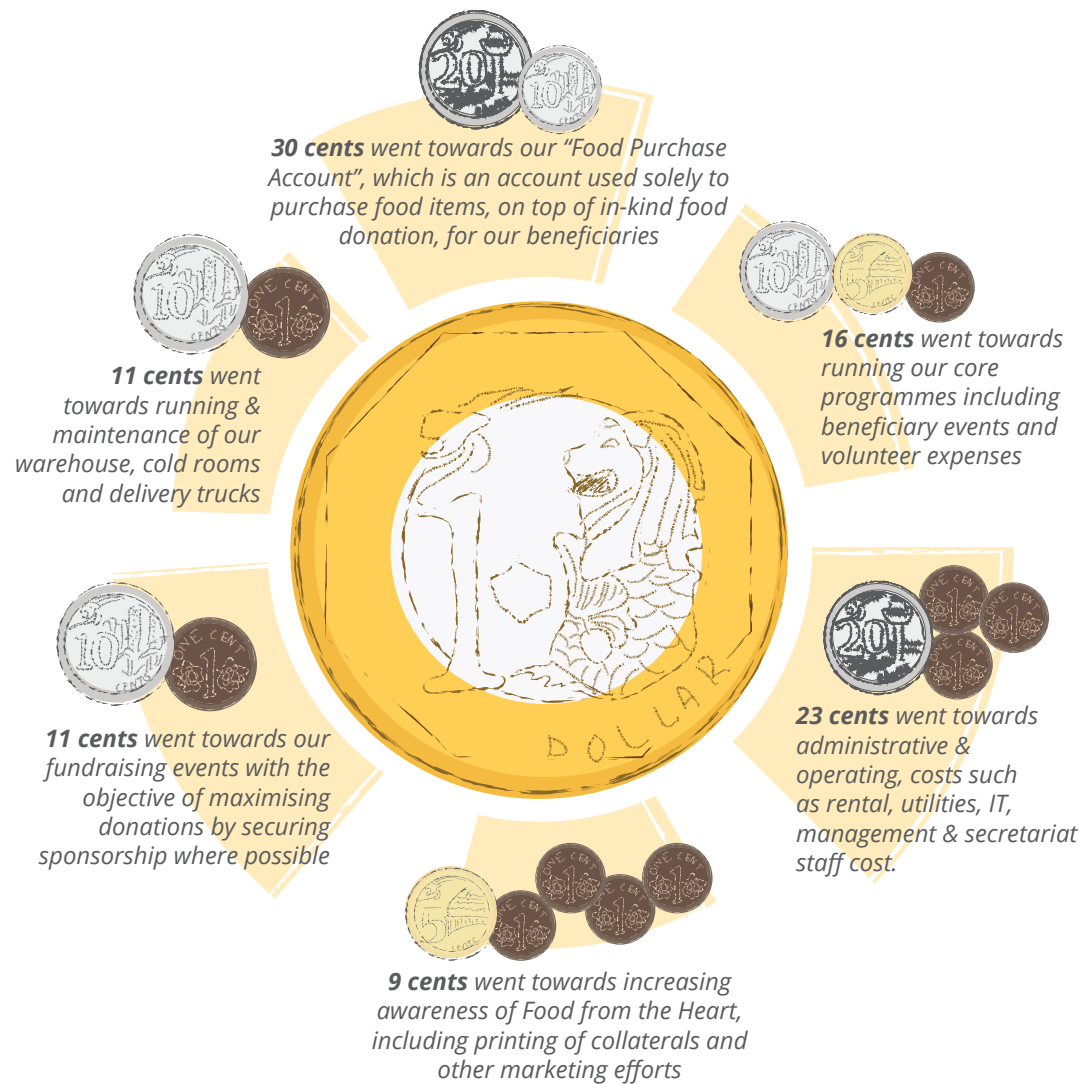
*Donations shown are S\$10,000 and above. Food from the Heart would like to thank all donors, regardless of amount contributed.

	2017 (\$\$)	2016 (\$\$)
3. Charitable Events*		
Overseas-Chinese Banking Corporation Ltd	35,000	25,000
Visa Worldwide Pte Ltd	34,762	29,214
4. Food Purchase Account*		
Applied Materials South East Asia Pte Ltd	-	18,687
Ascendas-Singbridge Gives Foundation	33,000	33,000
Bank of New York Mellon	-	34,418
Booz Allen Hamilton Alumni	-	33,000
Cru Asia Ltd	33,000	-
Geoconsult Asia Singapore Pte Ltd	-	10,000
Goldbell Foundation	33,000	-
Images In Motion Singapore	-	200,000
Overseas-Chinese Banking Corporation Ltd	50,000	-
SIA Engineering Company Ltd	66,000	66,000
Singapore American School Ltd	47,422	46,165
Singapore Post Ltd	-	33,000
Starwood Asia Pacific Hotels & Resorts Pte Ltd	33,000	-
UBS AG - UHNW Staff	-	18,960
Vantage Shipbrokers Pte Ltd	10,069	14,400
5. Cash & Bank Balance - Operating		
DBS Bank	163,616	11,757
Citibank - General Account	1,027,268	543,238
Petty Cash	2,000	2,000
Total	1,192,884	556,995
6. Cash & Bank Balance - Reserves		
CIMB Fixed Deposits - 3 months	312,705	-
CIMB Fixed Deposits - 6 months	-	308,818
CIMB Fixed Deposits - 12 months	617,236	607,301
Total	929,941	916,119
7. Cash & Bank Balance - Designated (For Specific Use Only)		
Citibank - Care & Share Account	794,137	794,137
Citibank - Food Purchase Account	662,047	1,114,560
Citibank - Food Purchase Account - Images in Motion Singapore	870,000	-
Citibank Fixed Deposit - Food Purchase Account - 6 months	100,805	100,705
CIMB Fixed Deposits - Food Purchase Account - 3 months	312,705	-
CIMB Fixed Deposits - Food Purchase Account - 6 months	-	308,818
CIMB Fixed Deposits - Food Purchase Account - 12 months	313,009	307,143
Total	3,052,703	2,625,363

*Donations shown are S\$10,000 and above. Food from the Heart would like to thank all donors, regardless of amount contributed.

The One Dollar Question

As a charity that utilises public funds, it is imperative that we are open and responsible with how these funds are utilised. All our accounts are externally audited annually in strict accordance with the standards governing Charities and Institution of Public Character. With limited resources of funds, time and manpower, we have succeeded in growing our reach to the needy with minimal increase in overheads. Our expenditure in 2017 was S\$2.53mil, with the breakdown as follows:



Board of Directors

Founders
Christine & Henry Laimer

Chairman
Ronald P. Stride

Treasurer
Khushroo Dastur

Secretary
Knut Unger

Board Members
Alex Chua, Cheryl Lee, Chin Bottinelli, Eugene Yang, Linda Soo-Tan, Susan Peh, Vivian PJ Chandran (stepped down as of Jan 2018)

Advisor
Christopher Martin

Board of Directors Meetings Attendance in 2017

Board Member	Appointment Date	2017 attendance %
Knut Unger	13 Nov 2007	75%
Ronald P. Stride	24 Aug 2009	100%
Linda Soo-Tan	1 Dec 2009	100%
Chin Bottinelli	30 May 2013	88%
Eugene Yang	15 Nov 2013	63%
Khushroo Dastur	13 Jan 2015	50%
Vivian Chandran	13 Jan 2015	88%
Cheryl Lee	12 May 2015	50%
Susan Peh	7 Sep 2015	50%
Alex Chua	25 Jan 2017	75%

*Information accurate as of time of print (March 2018)

Staff & Management

Chief Executive Officer

Kwa Eng Kiat (from June 2017)

Executive Director

Anson Quek (stepped down as of Dec 2017)

Communications & Development

Carolyn Tay, Jesvinder Kaur, Tara Tan, Erin Tan

Programmes

Shahira Maya Sahar, Fion Yong, Jeslyn Wee, Katherine Chin

Logistics

Mohamad Zuraimi Muchi, Mohmad Othman, Shari Bin Raman, Toh Bock Heng

Outreach & Corporate Social Responsibility

Jeneve Lim

Accounting & Finance

Geraldine Yong

Administration & Human Resources

Jaslin Koh



"No one has ever become poor from giving"
- Anne Frank

How can you Help?



Make a donation

Cash

For online donations, please visit www.foodheart.org/donate
All cash donations made in 2018 are eligible for a 250% tax deduction

In-kind

Make a donation of non-perishable food items such as rice or canned food, toiletries, and new or preloved toys in excellent condition



Sponsor/Host an Event

Birthdays from the Heart

Plan and execute creative activities, and/or sponsor birthday cakes and presents

Ad-hoc/Seasonal Events

Plan a day out to the zoo, host a Christmas party or help out at our annual events such as the Toy Buffet

Sign up as a volunteer

Bread Programme

Take up a bread route and help us rechannel surplus bread

Community Food Pack Programme

Help distribute food packs at any of our Self Collection Centres island-wide

Food sorting and packing

Sort and pack food rations at our warehouse

Events and Roadshows

Be our ambassadors to spread the word about what we do or help us plan our fundraising events

Adopt a Family

Your support will see disadvantaged children and their families receive monthly food packs

Adopt-a-Family

S\$660/year

Adopt-a-School of 50 students and their families

S\$33,000/year



Thank you!
To our donors,
sponsors, volunteers
and friends



130 Joo Seng Road #03-01 Singapore 368357
6280-GIVE (4483) | info@foodheart.org | www.foodheart.org
UEN: 200721064R

 *foodheart*

 *foodfromtheheartsg*